

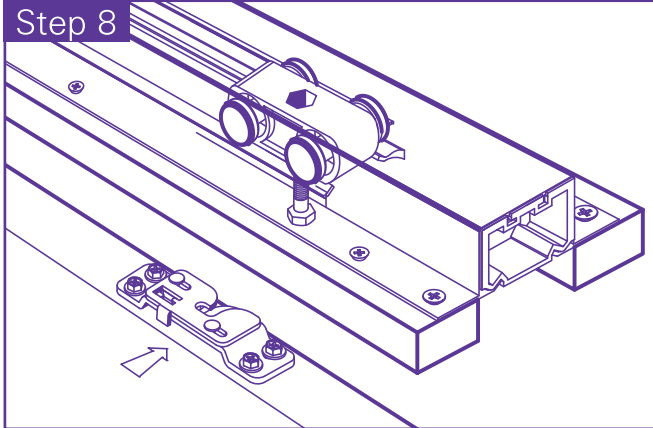
Installation continued

Step 7 Qld, NSW, WA only



Step 7. Cut the 2 glide guide strips to suit the door width. Tack both strips to the bottom of the door using 5 panel pins with each glide guide strip.

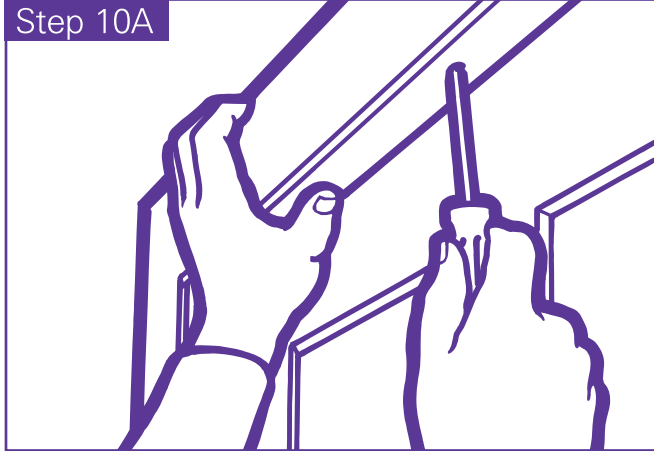
Step 8



Step 8. With the door in the cavity opening, lift the door to locate each door support bracket onto the carriage assembly bolt.

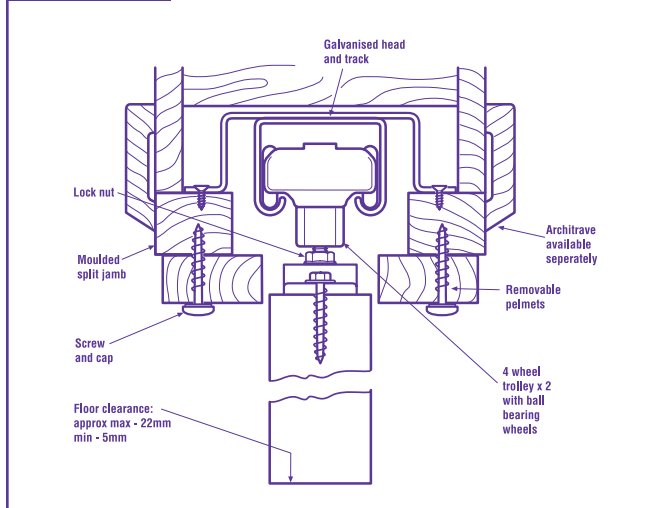
Step 9. Use the spanner provided to raise and level the door to the required height and to plumb against the closing jamb. Do not discard the spanner. Attach it to the spanner clip for future use.

Step 10A

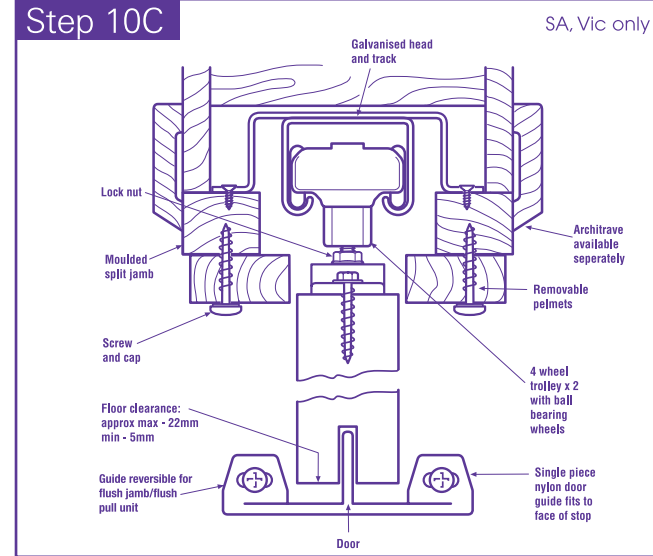


Step 10A. Screw in place the removable fillet using 4 x 35mm screws through a white snap cap base. Finish off with supplied snap caps. Refer to Steps 10A, 10B and 10C.

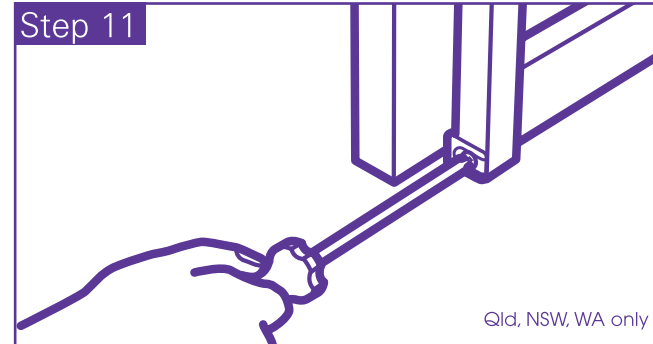
Step 10B Qld, NSW, WA only



Step 10C



Step 11



Step 11. Fix the two nylon finger guides to the base of the frame using the elongated opening (for subsequent adjustment). The flexible portion protrudes into the cavity. When the guides are positioned correctly, fasten with a 15mm round head fixing screw.

Showrooms:

Sydney (02) 9673 7100
Melbourne (03) 9794 1122
Brisbane (07) 3715 0100

Adelaide (08) 8243 0888
Perth (08) 9455 1333
Website www.corinthian.com.au



© Copyright reserved 11/11/99 Corinthian Doors NATIONAL Revised 27/07/2016 CORCNAT0634/224

Cavity Door Unit Installation instructions

- ▶ doors up to 65kg
- ▶ precision bearings
- ▶ quiet operation
- ▶ jump proof track
- ▶ standard architrave height
- ▶ five year guarantee

Slimline 3000 QuickFix

Thank you for purchasing the Slimline 3000 QuickFix Cavity Door Unit. Please follow these instructions carefully. Proper installation and maintenance will bring you years of trouble-free use. Care should be taken when installing the cavity unit into wall tiled areas. Please consult with the substrate/tile manufacturer as to their recommended fixing and tiling methods in accordance with the relevant standards.

Contents:

Check that you have all the contents and tools to install your Slimline 3000 QuickFix.

Contents Include:

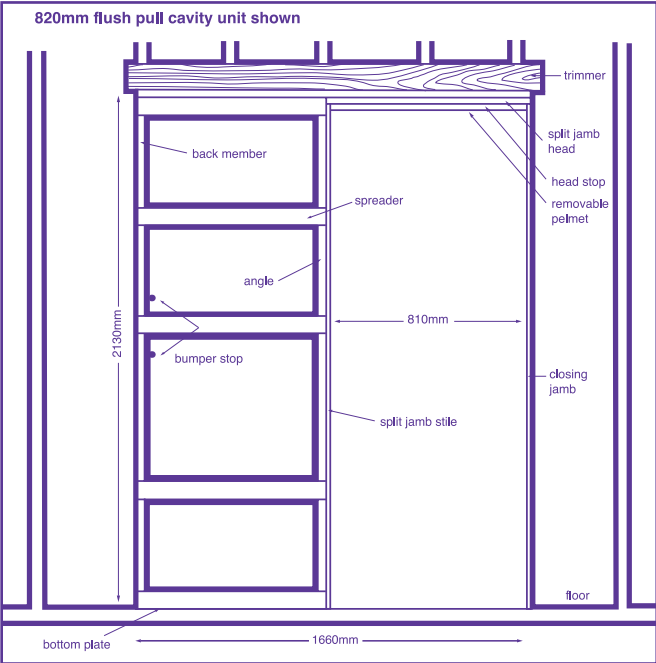
- 1 x cavity pocket
- 1 x head track assembly
- 2 x removable fillets
- + 1 x glide guide kit
- 1 x trolley kit
- x 1 x closing jamb

+ Glide guide kit Includes:

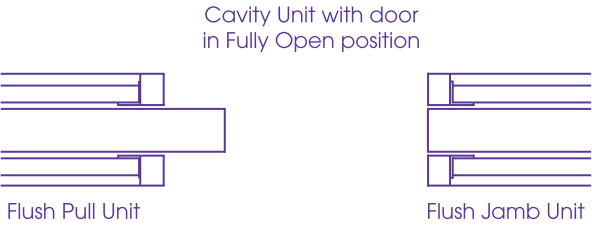
- 2 x glide guide strips
- 2 x nylon finger guides
- 2 x 15mm round head screws
- 10 x panel pins

Trolley kit Includes:

- 2 x carriage assemblies
- 2 x door support brackets
- 1 x reversible door guide
- 1 x spanner clip
- 1 x spanner
- 2 x 19mm pan head screw
- 6 x 12mm countersunk screws
- 1 x 15mm countersunk screw
- 4 x 35mm countersunk screws
- 8 x 30mm hex head screws
- 1 x 25mm masonry nail
- 4 x complete snap caps



x Vic, SA, WA only
+ WA, NSW, Qld only



Please Note:

Flush Jamb units manufactured in Vic & WA require a stud opening width as a Flush Pull unit + 100mm for single units and 200mm for double units.

Some sizes/types may not be available in all States.

Units also available to suit 2340 high door. Stud opening 2430 high.

Rough stud opening - Flush Pull Unit

Only Available in VIC and limited sizes in WA:

Door Size	single opening height/width	double opening height/width
2040 x 620*	2130 x 1260	2130 x 2470
2040 x 720*	2130 x 1460	2130 x 2870
2040 x 770*	2130 x 1560	2130 x 3070
2040 x 820*	2130 x 1660	2130 x 3270
2040 x 870	2130 x 1760	2130 x 3470
2040 x 920	2130 x 1860	2130 x 3670

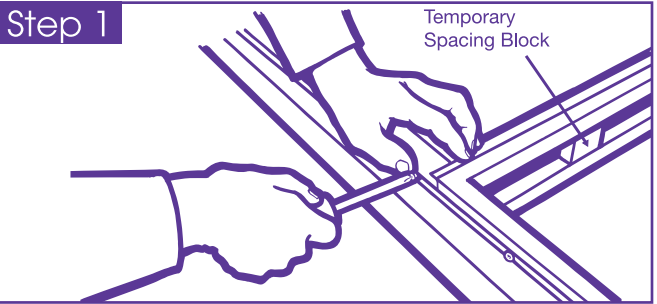
*=WA only

Rough stud opening - Flush Jamb Unit

Door Size	single opening height/width	double opening height/width
2040 x 620	2130 x 1300	2130 x 2550
2040 x 720	2130 x 1500	2130 x 2950
2040 x 770	2130 x 1600	2130 x 3150
2040 x 820	2130 x 1700	2130 x 3350
2040 x 870	2130 x 1800	2130 x 3550
2040 x 920	2130 x 1900	2130 x 3750

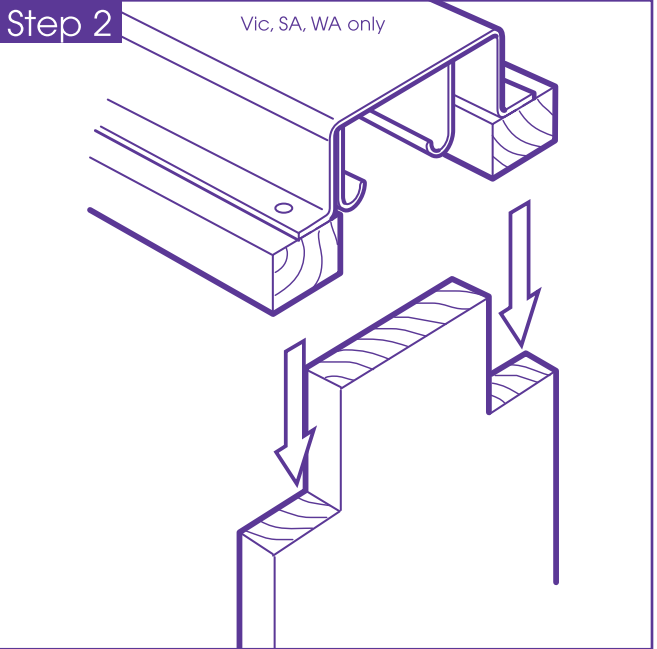
Installing your new Slimline 3000 QuickFix

Step 1



Step 1. Fit and screw the head track assembly to the cavity pocket using the 6 x 12mm countersunk screws. **Do not remove the temporary spacing blocks until the wall sheeting has been completed. Failure to adhere will void warranty.**

Step 2

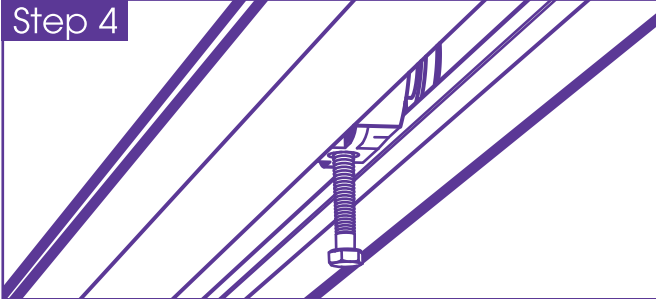


Step 2. Screw/nail the closing jamb to the head section, fixing through head timber into closing jamb stile.

Step 3. Place the assembled unit in position in the opening. Plumb and fasten to the brick/stud.

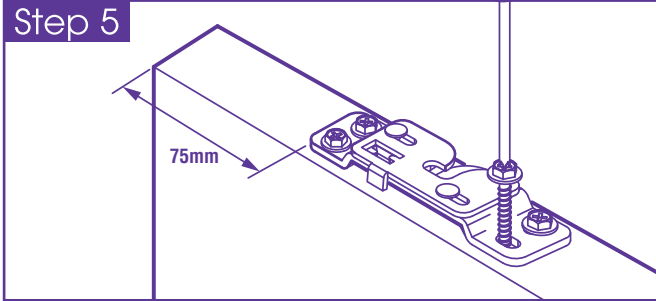
Fasten the base to the floor using the concrete nail provided. NSW, Qld only. Fasten the head track assembly to the top of the opening using the 1 x 19mm pan head screw.

Step 4



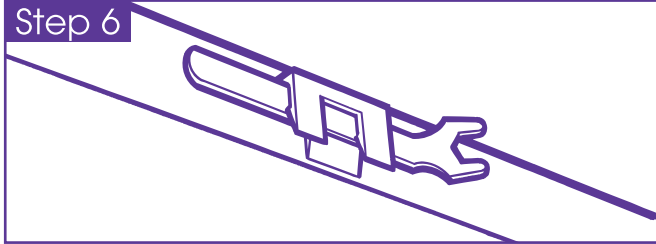
Step 4. Place both carriage assemblies in the track.

Step 5



Step 5. Attach the 2 x door brackets to the top of the door using the 8 x 30mm hex head screws, 75mm in from each side and central to the thickness of the door. **Ensure both door support brackets are facing in the same direction.**

Step 6



Step 6. Attach the spanner storage clip to the top of the door using the 1 x 15mm countersunk screw.